

KANSAS CITY • MISSOURI • DOWNTOWN • BALTIMORE AT 14<sup>th</sup>

# HOTEL PRESIDENT

CONVENTIONS

SALES MEETINGS

TRADE SHOWS

GROUP DINING

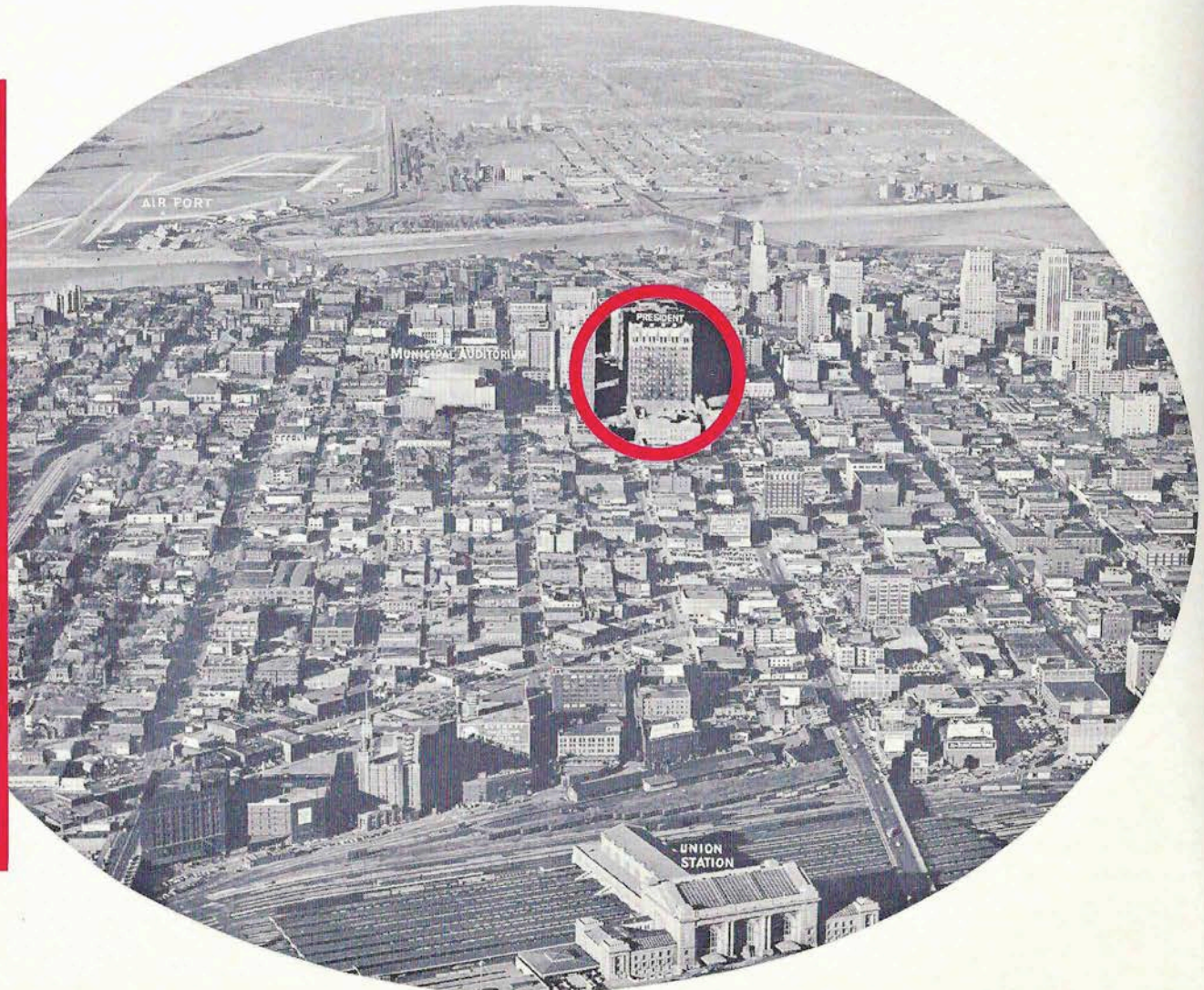


*Within or adjacent to -*

**SHOPPING • FINANCIAL • BUSINESS • THEATRICAL DISTRICTS**  
and just **1** block from Kansas City's Great **MUNICIPAL AUDITORIUM**

## **7** Service Advantages!

- 100 Percent, Year-Around Air-Conditioned
- Running Ice Water in Every Room
- Free Central System 4-Station Radio in Every Room
- Available Television with Special Antenna Connection
- Every Suite with Bath, Television and Radio
- Fireproof Garage Across the Street
- Modern Parking Lot Adjoining the Hotel



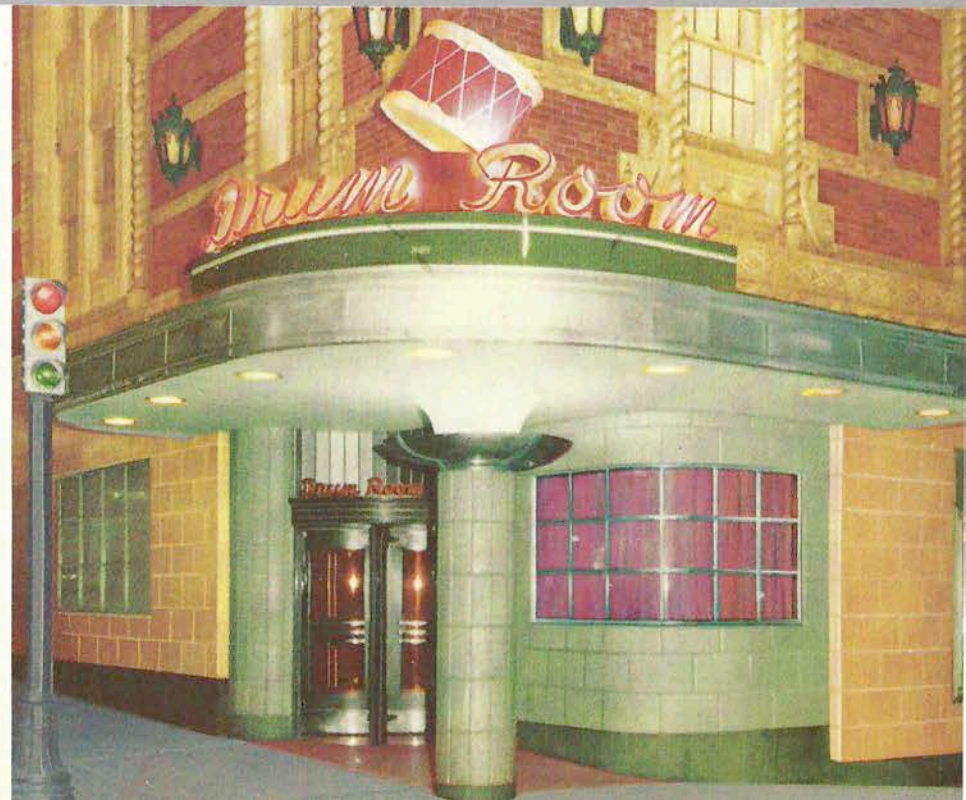




*"Hello There -*

*"It's mighty nice to meet you, and as I'm sure you're interested in really knowing the Hotel President, I'll personally show you the many features in convention, sales-meeting and group-dining facilities, as well as those for gracious away-from-home living.*

*"You see, we're mighty proud of our hotel ... so come in!"*







“Surely you’ll appreciate this spacious, soft-carpeted lobby with many deep-tufted chairs and divans beckoning their use as you await friends or just enjoy comfortable leisure moments.

“And to your right — atop those seven steps — you’ll see the check-room and entrance to our off-lobby, sizable banquet or group-meeting room. Let’s step into the Walnut Room, with its beautiful walnut paneling and rich carpeting.

“Truly a room men especially appreciate, isn’t it?”







"Here we are on the Mezzanine. You know we like this floor. It is just about knee-deep in comfort for friendly meetings and there are writing desks should you need them.

"Also, the Mezzanine has, to your left, a truly distinctive business or sales-conference room — M-4. Let's step in. Complete, isn't it? . . . with those handy folding-arm chairs, the rostrum with a motion-picture screen back-drop, a side wall with cork panels for pin-ups and a long table for additional displays.

"Over here on the same end of the Mezzanine, is M-5. You'll appreciate the comfort and luxury of this conference room.

"And now let's step over and take the elevator to the second floor."





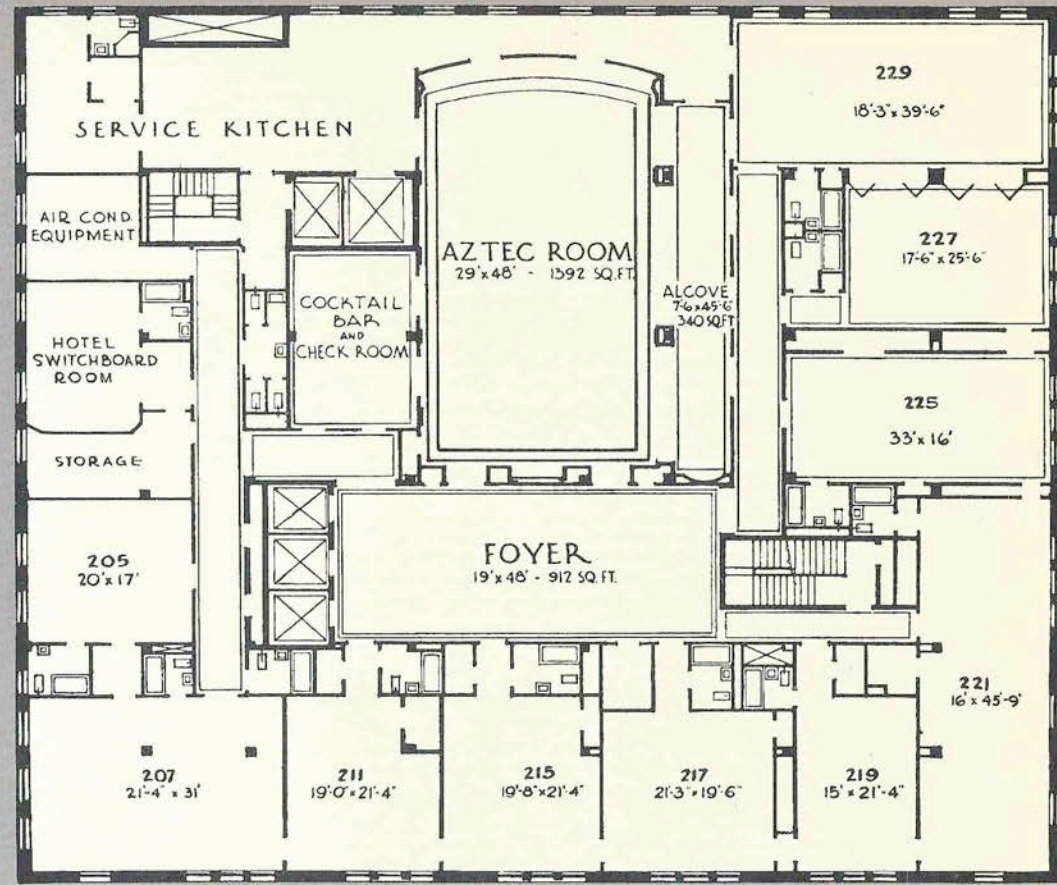


“This second floor is outstanding for Kansas City hotels as to convention facilities, in that it offers ten meeting-dining rooms grouped around a spacious foyer, which also proves ideal for convention registration, and a larger meeting-dining room — The Aztec. The meeting capacity of these ten vary from 40 to 80, with dining capacity from 32 to 60 guests, and each has its roomy, full bathroom.

“The Aztec is an unusual atmospheric room with a meeting capacity of 235 and 175 for dining. Yes, and it has its own sizable, fully-equipped adjoining snack and beverage bar. Certainly a closely-knit setup, with the Aztec as a central meeting room and committee rooms a few steps away.”





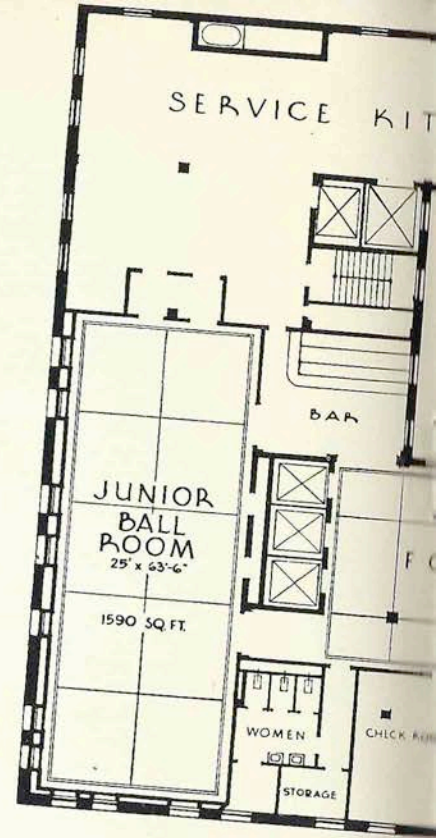
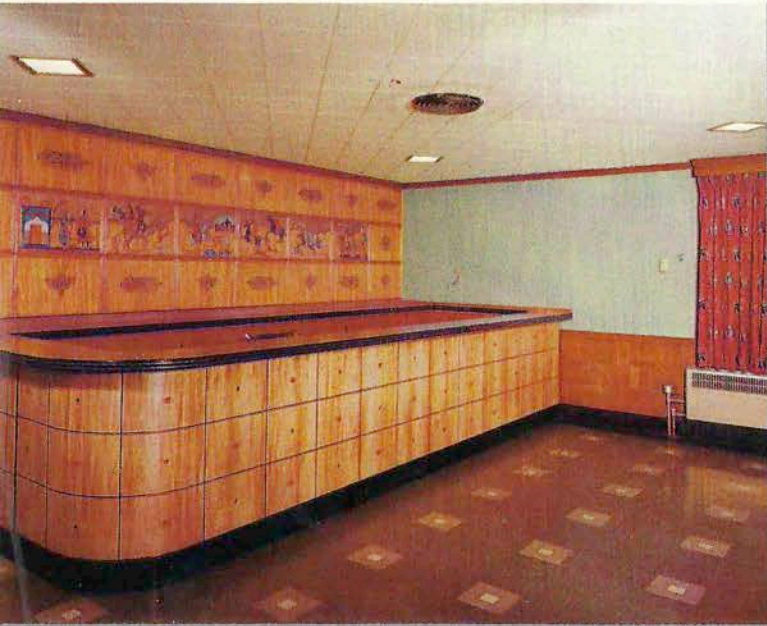


“You’ll note, to your right, that two of the second floor rooms can be thrown together for a dining capacity of a hundred. The one to your left has a meeting capacity of 75... dining 50.

“And this point is very important: — you’ll note from the floor plan that the second floor boasts of its own complete service kitchen. This means dining functions enjoy hot foods served quickly from just a few feet away.”



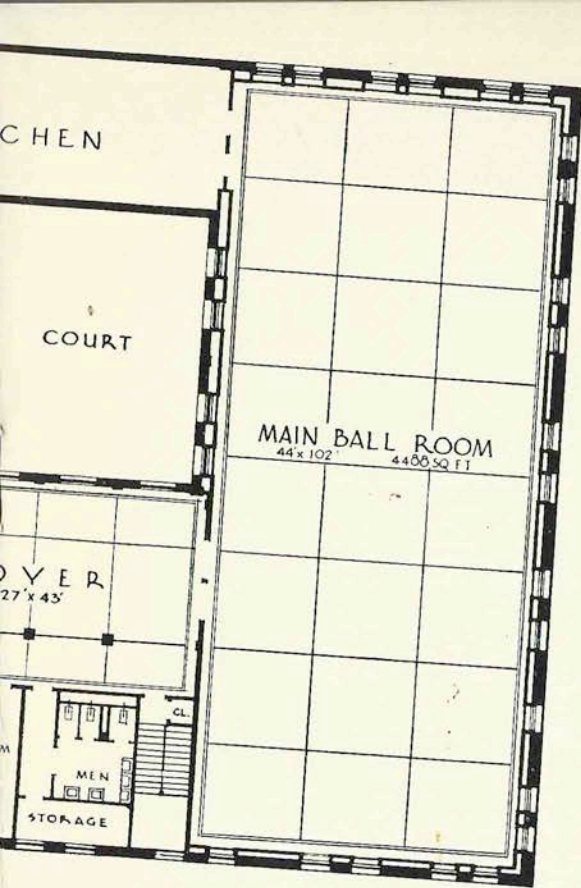




“And here we are up on the twelfth floor. A great layout, isn't it? This proves ideal for sizable conventions and dining functions. At the top is our Junior Ballroom, with a seating capacity of 225 . . . dining 185. And step in here to the connecting snack-beverage bar, beautifully equipped, which also connects with the luxurious large foyer — thereby serving the Grand Ballroom also.

“And notice that this floor is reached by a battery of three elevators, carrying guests directly into the foyer.”





"And here's the beautiful Grand Ballroom . . . with a seating capacity of 800 . . . dining 600. Atop the President the Ballroom not only is secluded but divorced from traffic noise. And it's one of the two largest hotel meeting-dining rooms in Kansas City.

"Here's another point to consider. For dining groups of more than 600, the Ballroom and Junior Ballroom tie in together beautifully, with dining guests moving into the Ballroom for speaking after the banquet.

"And don't forget this important feature: — The two Ballrooms have their own complete service kitchen.

"One final thought for the twelfth floor. Off the spacious foyer is a large check-room, a Powder Room and Gentleman's Lounge. Truly complete!"







"Now about gracious-away-from-home living. To your left . . . the living room of a luxurious corner suite, with private entrance. Note the carefully furnished atmosphere for entertaining friends or for convention officers planning the convention agenda. Large built-in television and 4-station radio.

"How about that complete beverage—snack bar with outside service entrance? A half-bath, also. Above is the connecting bedroom with twin beds. And a second connecting bedroom available.

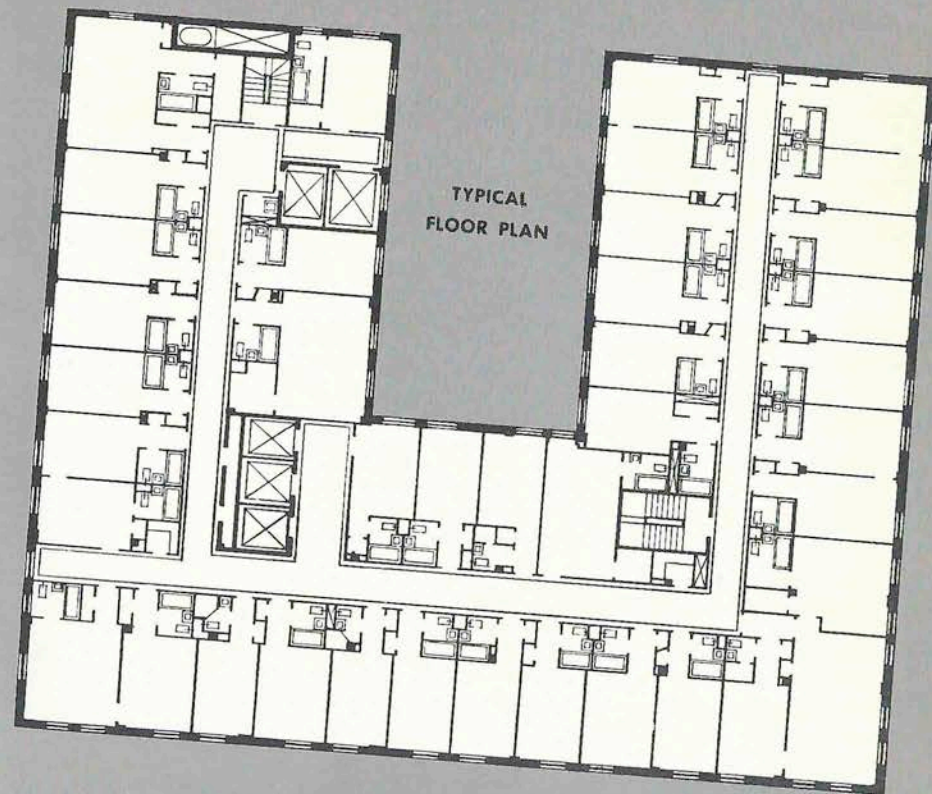




"At your upper right is the plan of a typical guest room floor, showing the arrangement of guest rooms and their proximity to fully enclosed stairs and fire escapes.

"You know . . . The President has just about every type of room the traveler demands — to fit every size pocketbook. Yet every room is carefully furnished for 100 per cent comfort, including circulating ice water, free radio and permanent television sets or provision for one if desired.

"And here, at your lower right, is an attractive guest room with twin beds, moderately priced. Remember, too, The President guests are in a fire-proof hotel and protected from outside noise and dirt — for with 100 per cent air conditioning the year around, windows are for sunlight — not ventilation. And you don't find that in many hotels."







“Two more guest rooms —one traditional and the other studio type. They offer a wide display of soothing color in furnishings and equipment, and every comfort of home.



“To your lower left is a studio type room with twin beds which I’m sure you’d like. And it’s very moderately priced. To its right is our smallest room with single bed and shower, but you’d be surprised at the roominess it offers through carefully - planned furnishings.

“And now we’ll take the elevator down to the Lobby.”





"Here we are . . . to look over the nationally-known Drum Room. Two views show the Drumbar, the room's upper lounge level, with its replica of a huge drum. Entrance from the lobby and also the street. Both bar stools and wall banquettes.



"Cuisine? Drum Room chefs are recognized for their tempting culinary creations and glorification of 'Kansas City Steaks'."

# Drum Room

"Kansas Citians term the Drum Room 'Kansas City's most beautiful restaurant'. You'll thrill to the striking mural of South Sea Islanders by the famed Winold Reiss . . . his first west of Chicago.



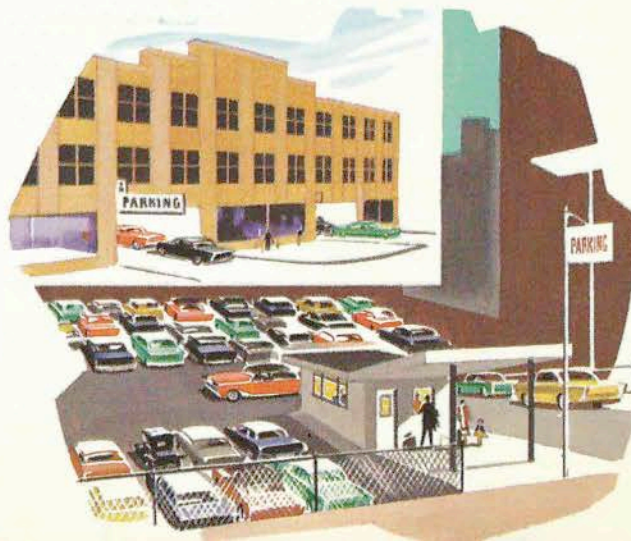




"I'm sure you'd enjoy the atmosphere, as well as the delicious food and prompt, economical service of the Coffee Shop. It's really convenient... just off the lobby by the elevators.

"The Coffee Shop kitchen adjoins the room, with quick pass-thru service to pleasant, efficient waitresses.

"And the Coffee Shop is open daily from 6:30 in the morning until the late evening hours.

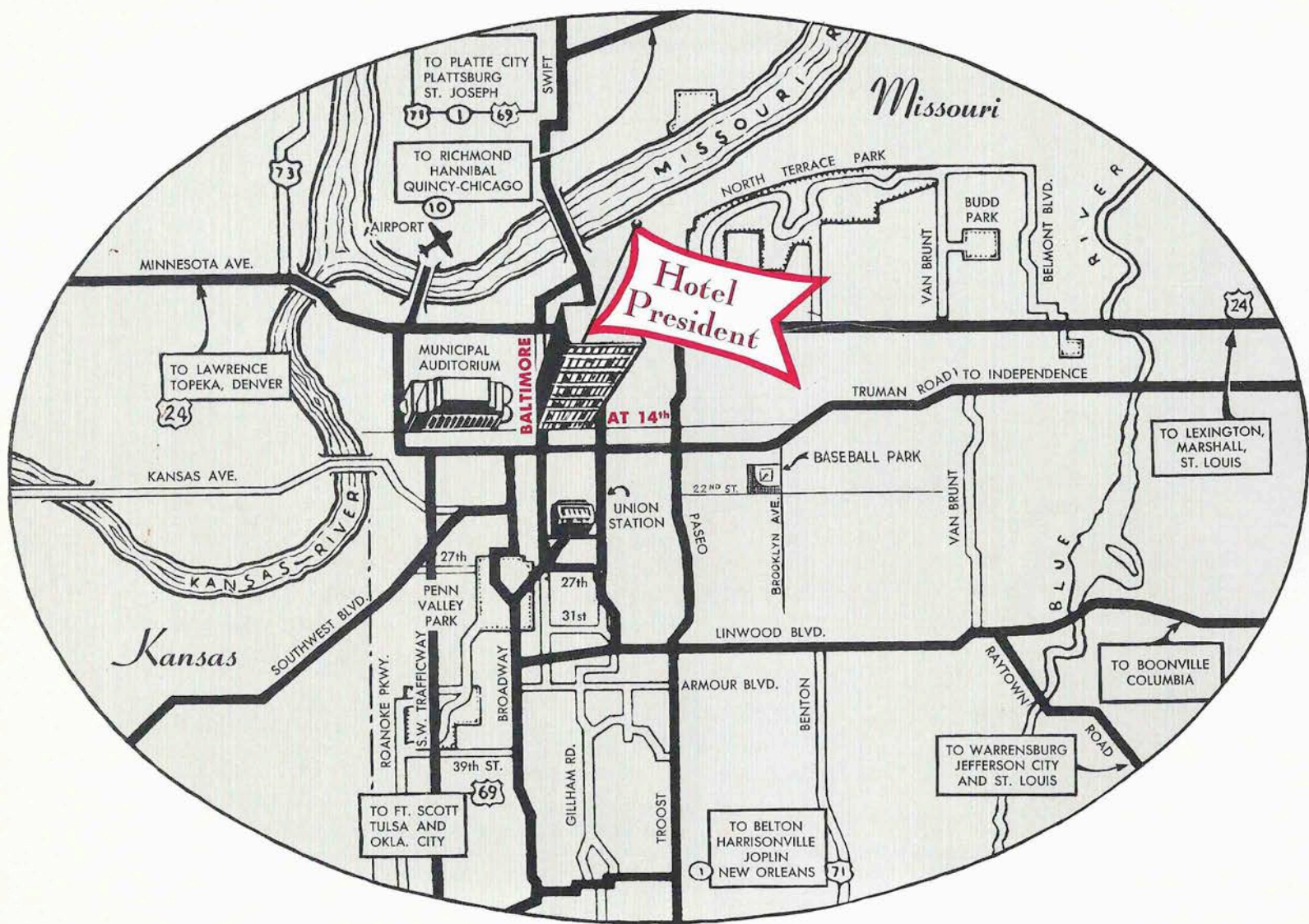


"Well... that concludes your tour of The President. It's been a pleasure to show you about.

"Goodbye... we'll be looking forward to seeing you soon."







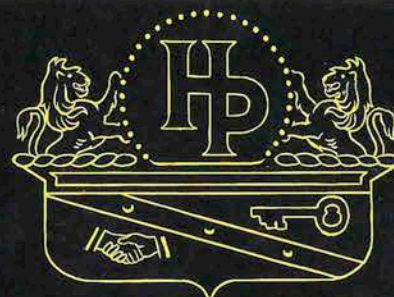
**CONVENIENT!** Just 6 minutes away from Kansas City's Municipal Airport... 5 minutes distant from Kansas City's Union Station. The map also shows the great Municipal Auditorium 1 block distant. In close proximity are both the City Hall and Jackson County Court House. Note, also, Hotel President is quickly and easily accessible by motor car no matter from what direction you approach Kansas City.

FOR ADDITIONAL INFORMATION, CALL—

Kansas City—Grand 1-5440  
Teletype: 537



**HOTEL PRESIDENT**



**KANSAS CITY • MISSOURI**